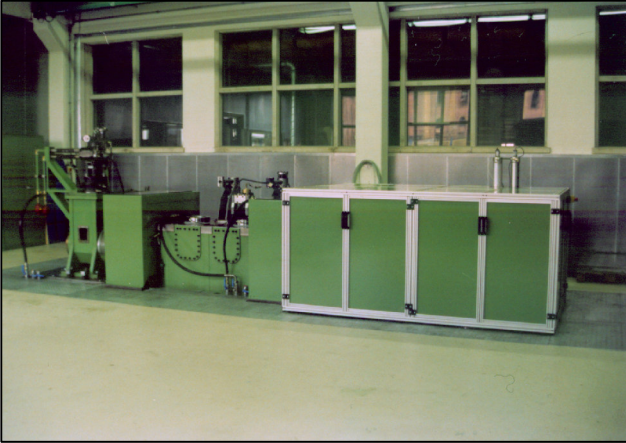
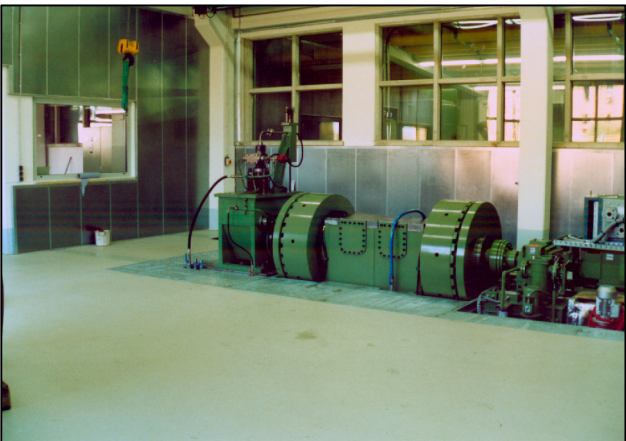


# Injection System Teststand ITB-130



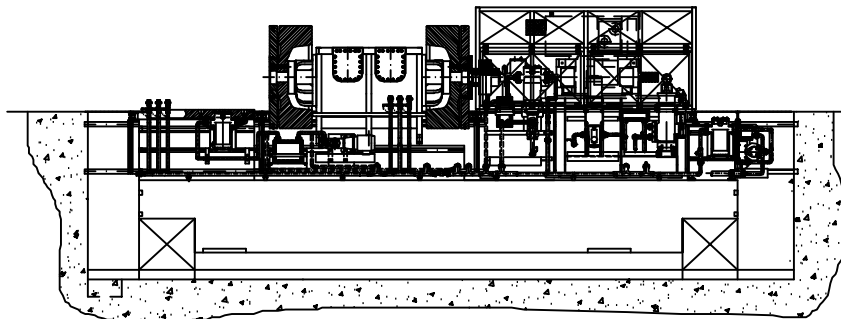
## Features:

- The teststand is assembled on a rigid concrete foundation, mounted on resilient elements.
- 3 independent fuelsystems (Testoil, DK, HFO) for series production, R&D and endurance testing. All components of fuel- and luboil-systems mounted on the concrete block.
- two large flywheels ( $I=1250\text{m}^4$ ) to ensure constant speed.
- Cambox with integrated flywheel bearing. Rapid change between different configurations by exchange of camshaft and topplate of the cambox.
- Possibility to mount a second cambox on the free end of the camshaft (high flexibility).
- PC-based control system for automatic series- and endurance testing.



## Technical Data:

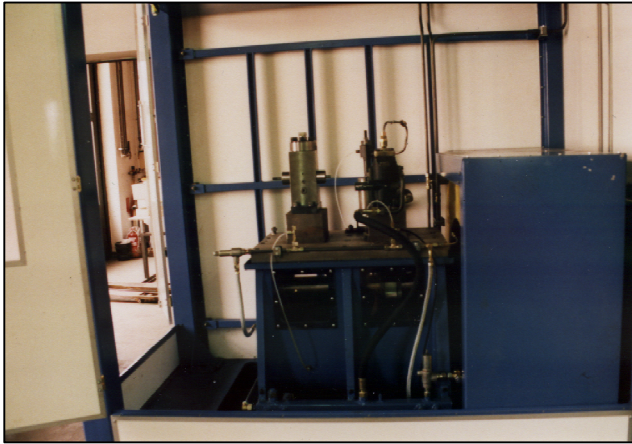
- Speed : 0-500rpm.
- Drive : 130kW DC-Engine,  
Gear box with gear ration 1:6
- Peak Torque : 60 kNm
- Plunger Diameter: 55mm at 2000bar peak pressure



**FMC Fiedler Motoren GmbH**

info@FMC-Fiedler-Motoren.com www.FMC-Fiedler-Motoren.com

# Injection System Teststand ITB-23



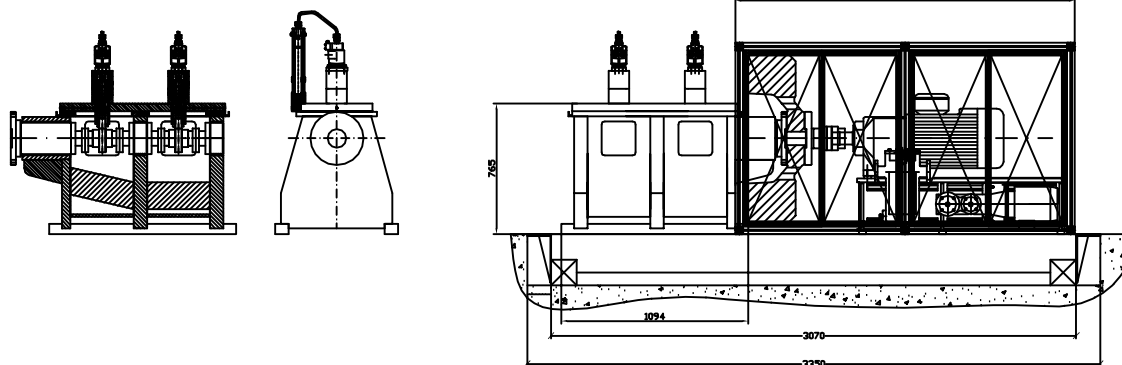
## Features:

- The teststand is assembled on a rigid concrete- or steel foundation, mounted on resilient elements.
- Fuel- and Luboil-systems mounted on the block. No external devices.
- Large flywheels ( $I=400 \text{ kgm}^4$ ) to ensure constant speed.
- Cambox with integrated flywheel bearing. Fast change between different configurations by exchange of camshaft and toplite of the cambox.
- PC-based control system for automatic series- and endurance testing.



## Technical Data:

- Speed : 0-1000rpm.
- Drive : 23kW Engine,  
Gear box with gear ration 1:3
- Peak Torque : 9 kNm
- Plunger Diameter: 32mm at 2000bar peak pressure



**FMC Fiedler Motoren GmbH**

info@FMC-Fiedler-Motoren.com www.FMC-Fiedler-Motoren.com